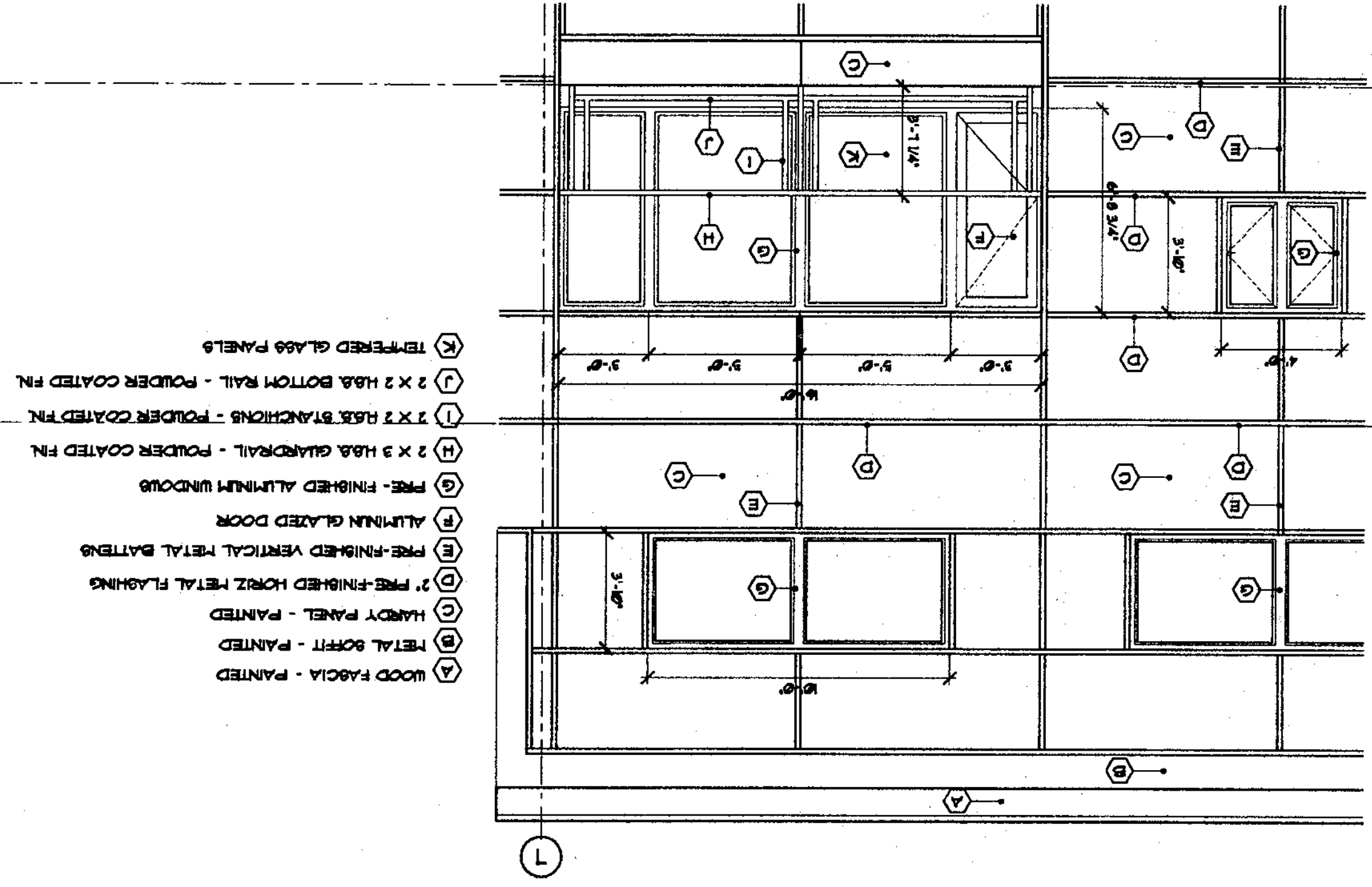


Architect Nicholas Bawlf 642 Balfour Street Victoria, B.C. V8V 2E5 Phone / Fax: 250.684.0071 Email: info@nicholasbawlf.com		Client The Wing Proposed Multi-Family Residential Development, Phase 1 505 & 509 Wilson Street Victoria, B.C.	
Project Title BUILDING ELEVATIONS SHEET NO.	Scale AS SHOWN	Date 24.11.03	Sheet No. A4.1

RECEIVED
 NOV 28 2003
 C.T. OF VICTORIA
 PERMITS & INSPECTIONS DIVISION

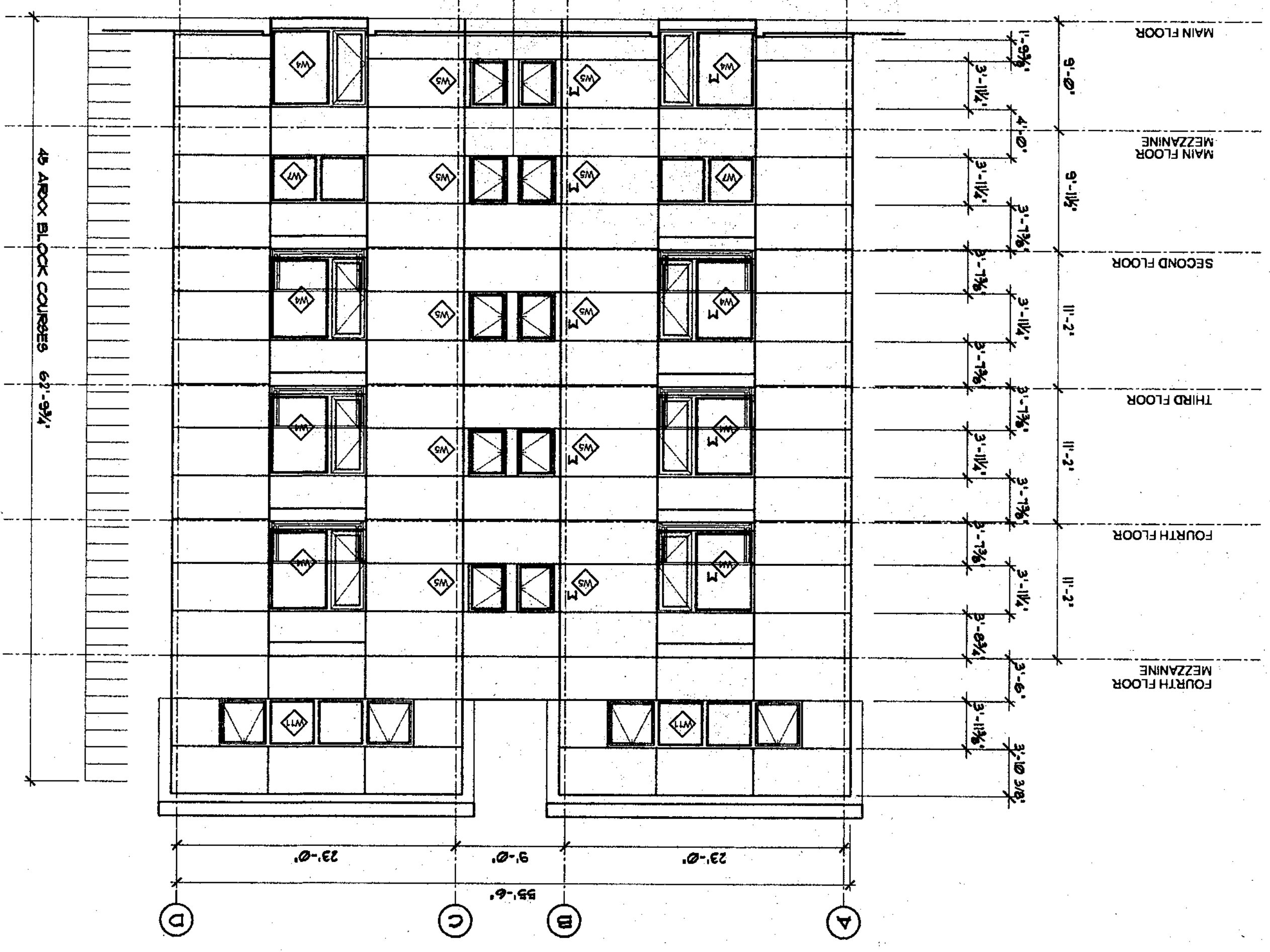
N.B.
 27/1/03

3 Detail
 Elevation Enlarged
 SCALE: 1/4" = 1'-0"



- (A) WOOD FACIA - PAINTED
- (B) METAL SCOFF - PAINTED
- (C) HARDY PANEL - PAINTED
- (D) 2" PRE-FINISHED HORIZ. METAL FLASHING
- (E) PRE-FINISHED VERTICAL METAL BATTING
- (F) ALUMINUM GLAZED DOOR
- (G) PRE-FINISHED ALUMINUM WINDOW
- (H) 2 X 3 HASL GUARDRAIL - POWDER COATED FN.
- (I) 1 X 7 HASL BRACKETS - POWDER COATED FN.
- (J) 2 X 2 HASL BOTTOM RAIL - POWDER COATED FN.
- (K) TINTED GLASS PANELS

2 West Elevation
 SCALE: 1/8" = 1'-0"



1 North Elevation
 SCALE: 1/8" = 1'-0"

