

DATE	1/15/03
CHECKED	SEPTEMBER 2003
DRAWN	
PROJECT NO.	2301-03
DRAWING NO.	

ELECTRICAL
SITE PLAN
 RECEIVED
 DEC 13 2003
 CITY OF VICTORIA
 PERMITS & INSPECTIONS DIVISION

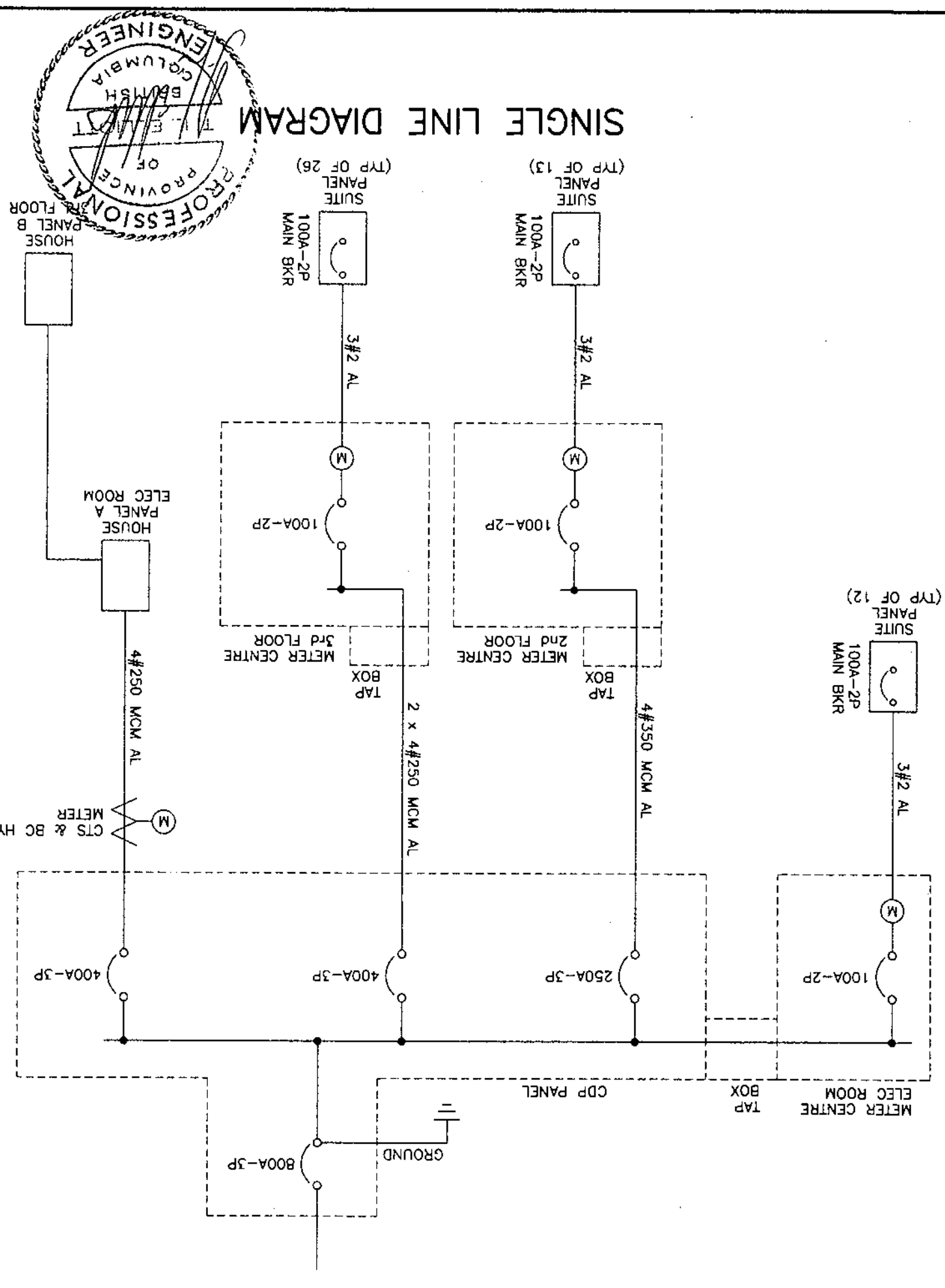
PROPOSED MULTI FAMILY RESIDENTIAL DEVELOPMENT
 WILSON ST, VICTORIA

CLIENT

TJ BLIJOTT & ASSOCIATES LTD.
 ELECTRICAL ENGINEERING
 8064 LAUREL RD. UNRIVILLE B.C. V0R 2H0
 PH. (250) 396-2375 FAX (250) 390-2736
 EMAIL: tj@bljott.com

NO.	REVISION	DATE
2	REVISED UTILITY SERVICES	DEC 8/03
1	BUILDING PERMIT ISSUE	NOV 10/03

NOTES



LOAD CALCULATION
 TYPICAL SUITE

1. FLOOR AREA: 1st 45 sq.m.	=	3,500 VA
2. FLOOR AREA: 2nd 45 sq.m.	=	1,500 VA
3. REMAINING FLOOR AREA:	=	1,000 VA
4. RANGE:	=	6,000 VA
5. DRYER: 5.0 kw x 0.25	=	1,250 VA
6. SUB TOTAL VA:	=	13,250 VA
7. ELECTRIC HEAT:	=	2,050 VA
8. TOTAL VA:	=	15,300 VA
9. AMPACITY: 15,300 VA / 208V	=	74 AMPS

1. 1st UNIT: 1.0 x 1.0 x 13,250 VA	=	13,250 VA
2. 2nd & 3rd UNITS: 2.0 x 0.65 x 13,250 VA	=	17,225 VA
3. 4th & 5th UNITS: 2.0 x 0.40 x 13,250 VA	=	10,600 VA
4. NEXT 15 UNITS: 15.0 x 0.25 x 13,250 VA	=	49,888 VA
5. REMAINING 31 UNITS: 31.0 x 0.10 x 13,250 VA	=	41,075 VA
6. 1st 10.0 kw OF ELEC HEAT: (1.0 kw TOTAL)	=	10,000 VA
7. REMAINING ELECTRIC HEAT: 108.0 kw x 0.75	=	81,000 VA
8. PARKADE FLOOR AREA: 2,975 sq.m. x 10 VA	=	29,750 VA
9. ELEVATOR	=	25,000 VA
10. EXTERIOR LIGHTING:	=	25,000 VA
11. MISCELLANEOUS MECHANICAL:	=	5,000 VA
12. TOTAL VA:	=	285,088 VA
13. AMPACITY: 285,088 VA / 13 x 208V	=	792 AMPS

1. 1st UNIT: 1.0 x 1.0 x 13,250 VA	=	13,250 VA
2. 2nd & 3rd UNITS: 2.0 x 0.65 x 13,250 VA	=	17,225 VA
3. 4th & 5th UNITS: 2.0 x 0.40 x 13,250 VA	=	10,600 VA
4. NEXT 15 UNITS: 15.0 x 0.25 x 13,250 VA	=	49,888 VA
5. REMAINING 12 UNITS: 12.0 x 0.10 x 13,250 VA	=	15,900 VA
6. 1st 10.0 kw OF ELEC HEAT: (7.50 kw TOTAL)	=	10,000 VA
7. REMAINING ELECTRIC HEAT: 65.0 kw x 0.75	=	48,750 VA
8. ELEVATOR	=	25,000 VA
9. EXTERIOR LIGHTING:	=	25,000 VA
10. MISCELLANEOUS MECHANICAL:	=	5,000 VA
11. TOTAL VA:	=	197,913 VA
12. AMPACITY: 197,913 VA / 13 x 208V	=	550 AMPS

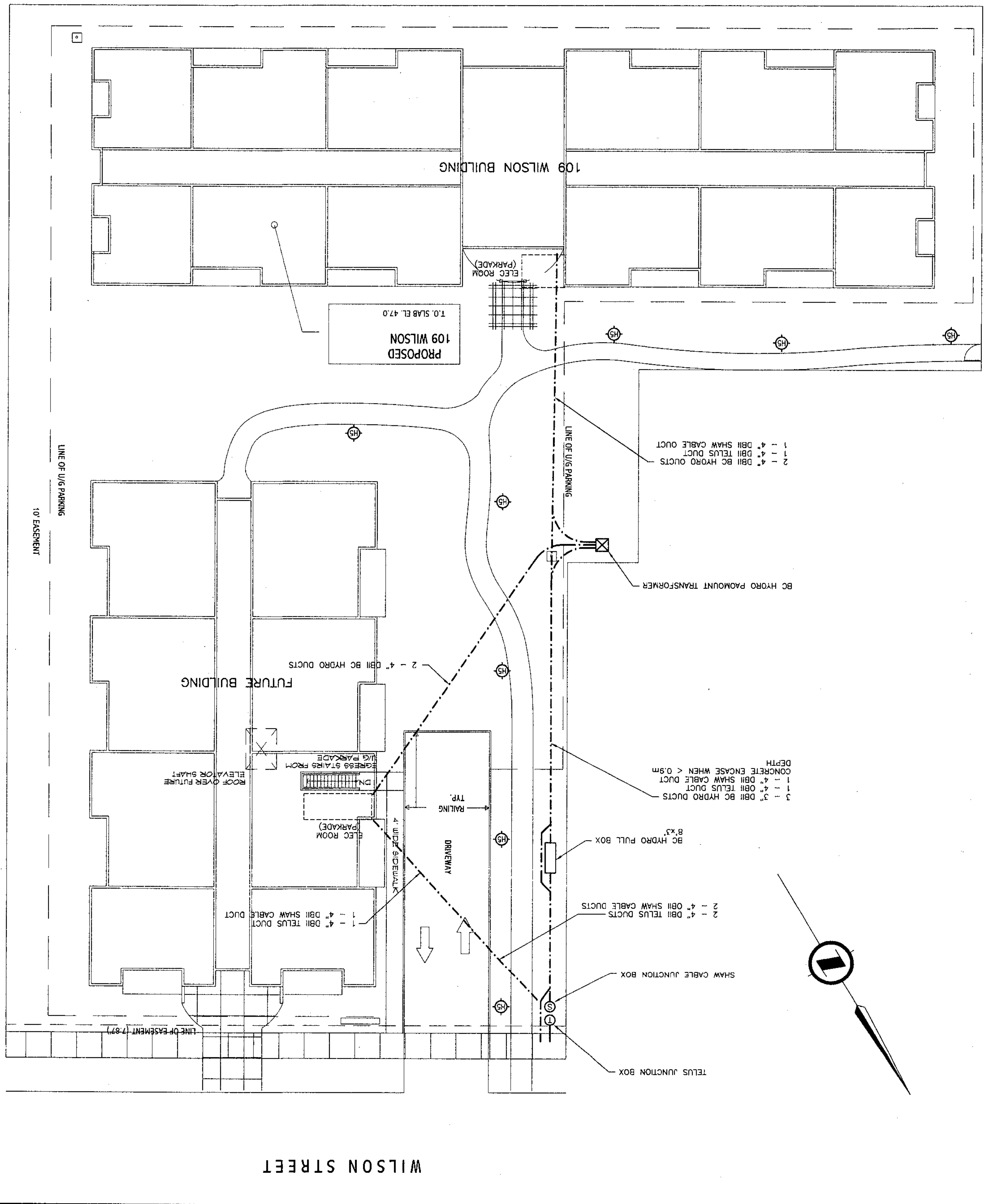
FIRE ALARM SCHEDULE

SYMBOL	DESCRIPTION
○	1' x 4' FLUORESCENT, SURFACE
○	INCANDESCENT/HID/FLUORESCENT, SURFACE
○	INCANDESCENT/HID/FLUORESCENT, RECESSED
○	CEILING
○	WALL
○	INCANDESCENT/HID/FLUORESCENT, SURFACE
○	300mm (12") A.F.F. DUPLEX RECEPTACLE, 1 GANG
○	300mm (12") A.F.F. DUPLEX RECEPTACLE, GROUND FAULT INTERRUPT
○	300mm (12") A.F.F. DUPLEX RECEPTACLE, WEATHER PROOF
○	AS REQUIRED 240 VOLT RECEPTACLE, AS SPECIFIED
○	300mm (12") A.F.F. SP 1 GANG SWITCH
○	1300mm (52") A.F.F. DIMMER SWITCH
○	1300mm (52") A.F.F. 3-WAY, 1 GANG SWITCH
○	2400mm (96") A.F.F. EMERGENCY BATTERY, 360 W
○	2400mm (96") A.F.F. EXIT SIGN, SURFACE, DIRECTION INDICATED
○	RENOTE EMERGENCY LIGHT, DOUBLE HEADS, WALL MOUNTED
○	RENOTE EMERGENCY LIGHT, DOUBLE HEADS, CEILING MOUNTED
○	AS REQUIRED DISCONNECT SWITCH
○	AS REQUIRED JUNCTION BOX
○	1500mm (60") A.F.F. MAGNETIC MOTOR STARTER
○	MOTOR CONNECTION
○	PANEL BOARD 'A'
○	AS REQUIRED PHOTOELECTRIC CELL
○	300mm (12") A.F.F. CABLE TV OUTLET
○	300mm (12") A.F.F. CABLE TV OUTLET
○	1300mm (52") A.F.F. CABLE TV SERVICE OUTLET
○	1300mm (52") A.F.F. TELEPHONE SERVICE OUTLET
○	GROUND, BURIED
○	END OF LINE RESISTOR
○	300mm (12") B.C. FIRE ALARM BELL
○	300mm (12") B.C. FIRE ALARM HORN
○	1300mm (52") A.F.F. FIRE ALARM PULL STATION
○	CEILING HEAT DETECTOR, FIXED TEMP.
○	CEILING SMOKE DETECTOR
○	DUCT SMOKE DETECTOR
○	WALL FIRE ALARM ANNUNCIATOR
○	WALL FIRE ALARM CONTROL PANEL
○	AS REQUIRED SPRINKLER, FLOW SWITCH
○	AS REQUIRED SPRINKLER, LOW PRESSURE SWITCH
○	AS REQUIRED SPRINKLER, VALVE SUPERVISORY
○	2.0 ELECTRIC BASEBOARD HEATER, RECESSED, 2500W c/w BUILT-IN THERMOSTAT
○	2.0 WALL ELECTRIC BASEBOARD HEATER, 2000 WATTS
○	1400mm (56") A.F.F. LINE VOLTAGE THERMOSTAT
○	1400mm (56") A.F.F. LOW VOLTAGE THERMOSTAT

FIRE ALARM SCHEDULE

ZONE	DESCRIPTION
1	PARKADE MANUAL PULL STATIONS AND SMOKE DETECTORS
2	MAIN FLOOR MANUAL PULL STATIONS AND SMOKE DETECTORS
3	SECOND FLOOR MANUAL PULL STATIONS AND SMOKE DETECTORS
4	THIRD FLOOR MANUAL PULL STATIONS AND SMOKE DETECTORS
5	FOURTH FLOOR MANUAL PULL STATIONS AND SMOKE DETECTORS
6	STAIRWELL SMOKE DETECTOR
7	STAIRWELL SMOKE DETECTOR
8	ELEVATOR SHAFT HEAT DETECTOR
9	CORRIDOR PRESSURIZATION DUCT SMOKE DETECTOR
10	PARKADE DRY SPRINKLER PRESSURE SWITCH
11	MAIN FLOOR WET SPRINKLER FLOW SWITCH
12	SECOND FLOOR WET SPRINKLER FLOW SWITCH
13	THIRD FLOOR WET SPRINKLER FLOW SWITCH
14	FOURTH FLOOR WET SPRINKLER FLOW SWITCH
15	FUTURE BUILDING FIRE ALARM CONTROL PANEL
16	DRY SPRINKLER PRESSURE SWITCH - TROUBLE
17	WET SPRINKLER TAMPERS VALVES - TROUBLE
18	
19	
20	

NOTE: THE CONSTRUCTION CONTRACT HAS BEEN AWARDED. ELECTRICAL CONTRACTOR MUST COORDINATE THE PROPOSED SPRINKLER LAYOUT WITH THE CONSTRUCTION LAYOUT WITH THE SPRINKLER CONTRACTOR, BEFORE CONSTRUCTION. REPORT ANY DISCREPANCIES TO THE ELECTRICAL AND MECHANICAL CONSULTANTS.



LUMINAIRE SCHEDULE

TYPE	MANUFACTURER	CATALOG No.	MOUNTING	DESCRIPTION	LAMP
F1	LITHONIA	P22120	SURFACE, CEILING	4' x 2 LAMP STRIP	2 x 32W T8
F2	LITHONIA	LB23120	SURFACE, CEILING	4' x 2 LAMP LOW PROFILE W/ PARABOL	2 x 32W T8
F3	OL LIGHTING	QL240W19120	CEILING, SURFACE	18" DIA LIGHT RING	1 x 40W CL
H1	BUDD	GV0510-M	SURFACE, CEILING	16" SQUARE PARKADE LIGHT	1 x 100W HPS
H2	BUDD	EB907-1-B5	SURFACE, WALL, ABOVE DOOR	6" x 6" WALL PACK	1 x 70W HPS
H3	LITHONIA	LE6705120 c/w ELB4	RECESSED, COMPACT	6" DIA POT c/w GLASS LENS	1 x 70W HPS
H4	LITHONIA	RK1005A120	RECESSED, CONC WALL, 3'-0" A.C.	36" x 6" BOLLARD	1 x 100W HPS
H5	LITHONIA	KB06705H9CVA120	GROUND, CONC BASE	36" x 6" BOLLARD	1 x 70W HPS
I1	INCANDESCENT			LAMP HOLDER	1 x 100W A19

LUMINAIRE SCHEDULE

SITE PLAN